



Walwa Primary School Yard Duty and Supervision Policy



Help for non-English speakers

If you need help to understand the information in this policy please contact Walwa Primary School
(02) 6037 1380

Purpose

To ensure school staff understand their supervision and yard duty responsibilities.

Scope

This policy applies to all teaching and non-teaching staff at Walwa Primary School, including education support staff, casual relief teachers and visiting teachers.

Policy

Appropriate supervision is an important strategy to monitor student behaviour and enables staff to identify and respond to possible risks at school as they arise. It also plays a vital role in helping schools to discharge their duty of care to students.

The Principal is responsible for ensuring that there is a well organised and responsive system of supervision and yard duty in place during school hours, before and after school, and on school excursions and camps and other school activities.

School staff are responsible for following reasonable and lawful instructions from the Principal, including instructions to provide supervision to students at specific dates, times and places. Supervision should be undertaken in a way that identifies and mitigates risks to child safety.

Before and after school

Walwa Primary School grounds are supervised by school staff from 8.40am until 3.40pm. Outside of these hours, school staff will not be available to supervise students.

Parents and carers will be advised through our newsletter, parent information pack and uEducateUs app that they should not allow their children to attend Walwa Primary School outside of these hours. Families are encouraged to contact Christina Keyzer on 02 6037 1380 for more information about pick-up and drop-off times.

If a student arrives at school before supervision commences at the beginning of the day, the Principal or nominee staff member will, as soon as practicable, follow up with the parent/carer to:

- advise of the supervision arrangements before school
- request that the parent/ carer make alternate arrangements.

If a student is not collected before supervision finishes at the end of the day, the Principal or nominee staff member will consider whether it is appropriate to:

- attempt to contact the parents/carers
- attempt to contact the emergency contacts
- contact Victoria Police and/or the Department of Health and Human Services (Child Protection) to arrange for the supervision, care and protection of the student.

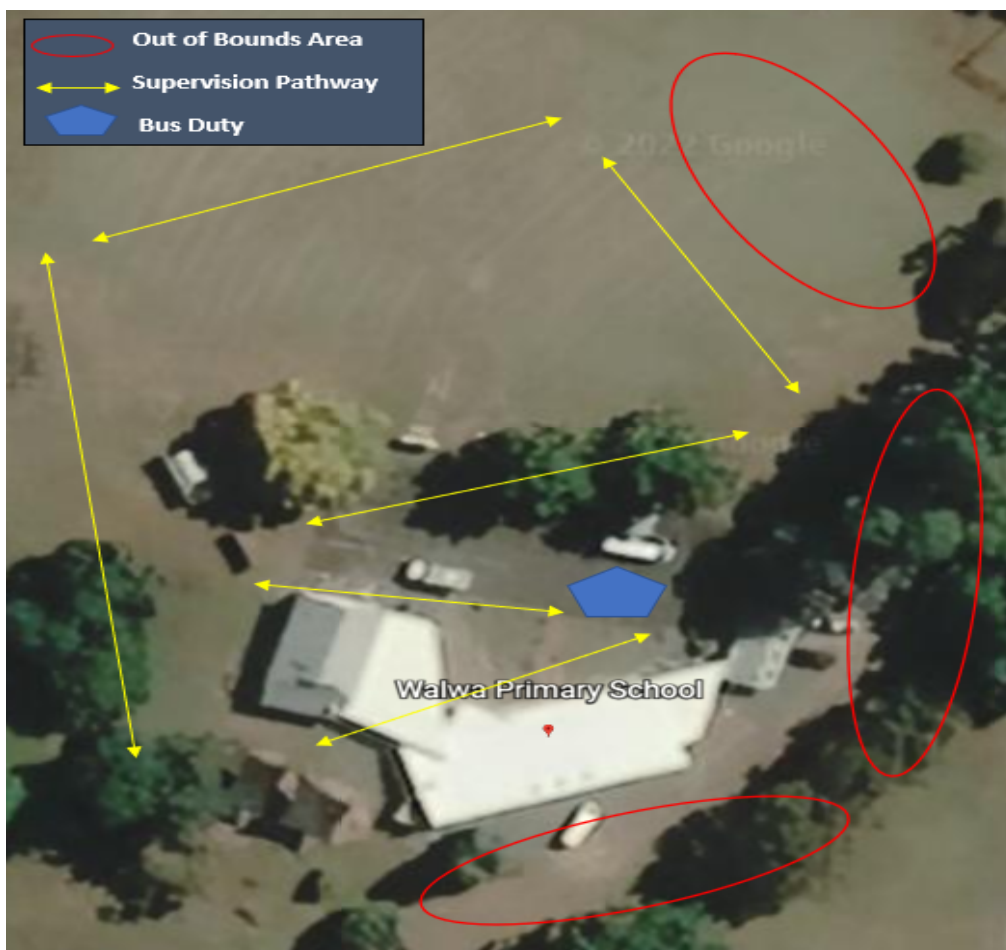
Yard duty

All staff at Walwa Primary School are expected to assist with yard duty supervision and will be included in the weekly roster. The principal is responsible for preparing and communicating the yard duty roster on a regular basis.

At Walwa Primary School, school staff will be designated at a specific time to supervise. Staff who are rostered for yard duty must continue to circulate the school grounds until they are replaced by a relieving teacher.

At Walwa Primary School, school staff will actively supervise the designated play areas. The designated play areas that are supervised by staff are:

- Football oval
- Basketball court
- Playground
- Sandpit



Yard duty responsibilities

Staff who are rostered for yard duty must continue to circulate the school grounds until they are replaced by a relieving teacher. Alternatively, due to the small student population, students will be required to play in a designated area that is easily visible from a central location.

During yard duty, supervising staff must:

- methodically move around the designated zone
- be alert and vigilant
- intervene immediately if potentially dangerous or inappropriate behaviour is observed in the yard
- enforce behavioural standards and implement appropriate consequences for breaches of safety rules, in accordance with any relevant disciplinary measures set out in our [Student Engagement and Wellbeing Policy](#)
- ensure that students who require first aid assistance receive it as soon as practicable
- log any incidents or near misses as appropriate in uEducateUs

If being relieved of their yard duty shift by another staff member (for example, where the shift is 'split' into 2 consecutive time periods), ensure that a brief but adequate verbal 'handover' is given to the next staff member in relation to any issues which may have arisen during the first shift.

If the supervising staff member is unable to conduct yard duty at the designated time, they should contact the school Principal with as much notice as possible prior to the relevant yard duty shift to ensure that alternative arrangements are made.

If the supervising staff member needs to leave yard duty during the allocated time, they should contact the school Principal but should not leave the designated area until the relieving staff member has arrived in the designated area.

If a relieving or next staff member does not arrive for yard duty, the staff member currently on duty should contact the school Principal and not leave the designated area until a replacement staff member has arrived.

Should students require assistance during recess or lunchtime, they are encouraged to speak to the supervising yard duty staff member.

Classroom

The classroom teacher is responsible for the supervision of all students in their care during class.

If a teacher needs to leave the classroom unattended at any time during a lesson, they should first contact the school Principal for assistance. The teacher should then wait until another staff member has arrived at the classroom to supervise the class prior to leaving.

School activities, camps and excursions

The Principal and leadership team are responsible for ensuring that students are appropriately supervised during all school activities, camps and excursions, including when external providers are engaged to conduct part or all of the activity. Appropriate supervision will be planned for school activities, camps and excursions on an individual basis, depending on the activities to be undertaken and the level of potential risk involved, and will follow the supervision requirements in the Department of Education and Training [Excursion Policy](#)

Digital devices and virtual classroom

Walwa Primary School follows the Department's [Cybersafety and Responsible Use of Technologies Policy](#) with respect to supervision of students using digital devices.

Walwa Primary School will also ensure appropriate supervision of students participating in remote and flexible learning environments while on school site.

Parents are responsible for the appropriate supervision of students accessing virtual classrooms from home:

- student attendance will be monitored daily
- any wellbeing or safety concerns for the student will be managed in accordance with our usual processes – refer to our Student Wellbeing and Engagement Policy and our Child Safety Responding and Reporting Policy and Procedures for further information.

Students requiring additional supervision support

Sometimes students will require additional supervision, such as students with disabilities or other additional needs. In these cases, the Principal or delegate will ensure arrangements are made to roster additional staff as required. This may include on yard duty, in the classroom or during school activities.

Supervision of student in emergency operating environments

In emergency circumstances, our school will follow our Emergency Management Plan, including with respect to supervision.

In the event of any mandatory period of remote or flexible learning our School will follow the operations guidance issued by the Department.

Communication

This policy will be communicated to our school community in the following ways:

- ✓ Provided to staff at induction and included in staff handbook/manual
- ✓ Discussed at staff meetings/briefings as required
- ✓ Made available publicly on our school website
- ✓ Included in transition and enrolment packs
- ✓ Made available in hard copy from school administration upon request

Information for parents and students on supervision before and after school is available on our school website and parent reminders are sent periodically in our school newsletter.

Further information and resources

- the Department's Policy and Advisory Library (PAL):
 - [Child Safe Standards](#)
 - [Cybersafety and Responsible Use of Technologies](#)
 - [Duty of Care](#)
 - [Excursions](#)
 - [Supervision of Students](#)
 - [Visitors in School](#)

Policy Review and Approval: This policy was last reviewed November 2022

Approved by: Christina Keyzer (Principal)

Next scheduled review date: November 2024

(Recommended Review Cycle for this Policy is 2 years)

This policy will also be updated if significant changes are made to school grounds that require a revision of Walwa Primary School Yard Duty and Supervision Policy.